

Collaborative, embedded professional learning

Our model will deliver coaching and training to center leaders and educators via one-on-one and small group on-site and virtual coaching, with professional learning community activities scheduled for center leaders. We will employ and guide center leaders in utilizing a content-focused-coaching (CFC) method of coaching, where coaches work individually or with groups of classroom teachers to design, implement and reflect on standards-based lessons that promote children's learning.

Building staff capacity and content knowledge

We will work closely with center leaders to increase their knowledge and ability to effectively run an early education and care center that supports strong educators and supports the emotional and academic development of children. We will help teachers develop their capacity, helping them to identify strengths and areas of need.

By the end of the project, center leaders will be able to sustain a model of continuous improvement and high quality childcare as outlined in the Classroom Assessment Scoring System (CLASS). The table below provides an overview of the short, mid, and long-term outcomes from our work:

TRAINING TOPICS		
Infant & Toddler Educator Trainings	Pre-K Educator Trainings	Leadership Trainings
<ul style="list-style-type: none"> - Promoting Strong Relationships Between Caregivers and Children - Communication and Collaboration with Families - Fostering Literacy Development - Fostering STEM Development 	<ul style="list-style-type: none"> - Building a Strong Classroom Culture - Using Child Data to Differentiate Instruction - Developing Children's Literacy Skills - Engaging Families in Literacy Development - Developing Children's STEM Skills - Developing Children's Number Sense 	<ul style="list-style-type: none"> - Transformative Leadership - Gearing Up - Digging Into Data - Family Engagement - Coaching & Continuous Improvement

Activities	Short-Term Outcomes	Mid-Term Outcomes	Long-Term Outcomes
Educator Professional Development <ul style="list-style-type: none"> - one on one and small group coaching - trainings - professional learning communities High Quality Supports <ul style="list-style-type: none"> - Blueprint for Early Learning Pre-K Curriculum - Books and Manipulatives - LEARN.cli.org and online portfolio of resources Assessments <ul style="list-style-type: none"> - COR Advantage - CLASS and ERS 	<ul style="list-style-type: none"> - Teachers and Center Leaders report understanding of CLASS and ERS criteria (as measured by surveys) - Teacher and Center Leaders report positive perceptions of intervention components (as measured by surveys) - Pre-kindergarten classrooms will implement the Blueprint curriculum with fidelity (as measured by the Blueprint checklist) 	<ul style="list-style-type: none"> - Ability to conduct a self-assessment using ERS/CLASS and use data to develop as program improvement plan - Consistent use of COR Advantage to inform instruction - Progression from current QRIS level to next higher level 	<ul style="list-style-type: none"> - Improved ERS/CLASS scores - Significant improvement in child outcomes - Center Leaders sustain gains post proje

Blueprint for Early Learning

Blueprint for Early Learning, a high-quality research-based Pre-K curriculum, provides a detailed set of teaching plans and resources for teachers to deliver engaging, intentional, and responsive Pre-K instruction. This comprehensive curriculum is based on the proven effective evidence of our previous Blueprint for Early Literacy Success, 3rd Edition, literacy supplement.

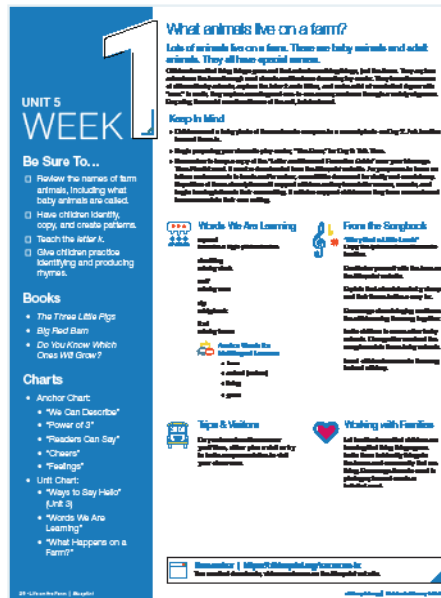
Our new Blueprint follows a clear scope and sequence organized into ten highly engaging thematic units that lead to purposeful and authentic learning. Each unit is coupled with carefully curated high-quality children's books and access to an online digital teacher resource portal.

We will provide our research-based curriculum, Blueprint for Early Learning, to classrooms to drive student learning and center quality improvement. We will coach teachers and their center leaders around using their existing curricula to meet/exceed their targets for student learning and center quality improvement.



CURRICULUM FEATURES

- Robust Scope & Sequence
- STEM Rich Hands-on Explorations
- Proven Effective Literacy Strategies
- Respectful Multilingual Supports
- Aligned to Head Start & State Standards
- Suggestions to Extend & Individualize Learning
- Embedded Point of Use & On Going Professional Development
- Fun, Engaging, Impactful & NEW!



Transforming Early Education

Founded in Philadelphia in 1988, Children's Literacy Initiative (CLI) is a national 501(c)(3) non-profit focused on strengthening early education in the United States. Our mission is to work with early childhood through fifth-grade educators to transform care and instruction so that children can become powerful readers, writers and thinkers.

Today, CLI is an award-winning national organization. During the 2018-19 school year, we served nearly 5,000 educators and 94,480 children located in more than 300 schools and early childhood education centers across the country.

By helping educators learn high-impact instructional strategies and nurturing dynamic professional learning communities, we build lasting capacity in teachers and school leaders. Our proven model includes:



Collaborative, embedded professional learning

Building staff capacity and content knowledge

Blueprint for Early Learning: a comprehensive curriculum

Our Impact

To enhance children's learning, our *Theory of Action* asserts that center directors and teachers need ongoing, structured professional development combined with high-quality curriculum, supports, and assessments for children. Our model will integrate high-impact, individualized, job-embedded coaching with resource-rich online learning opportunities.

Areas of Impact

- Early Education
- Early Learners
- Educational Equity
- Literacy
- Public Education
- Social Justice
- Teacher Professional Development